



Installing MacBook Pro 15" Retina Display Mid 2012 Battery

Written By: Brett Hartt

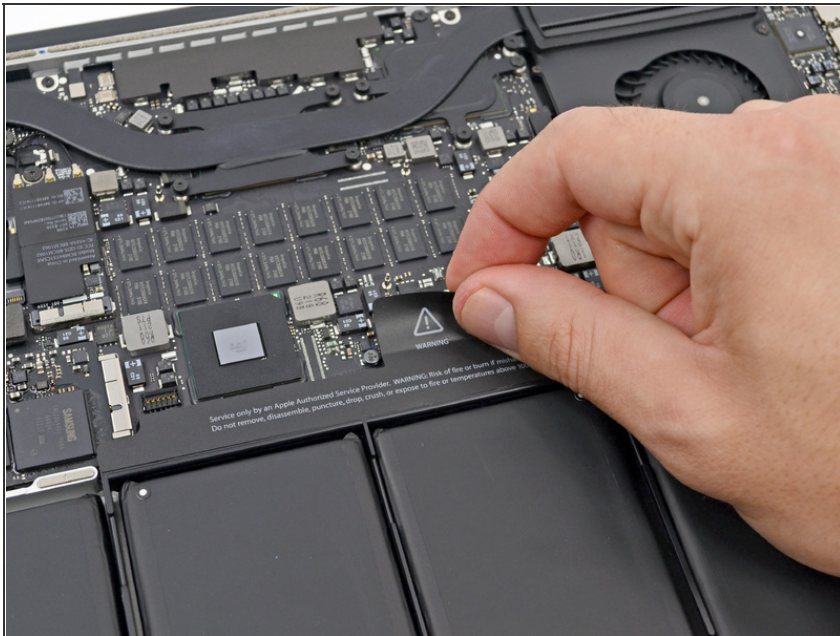
TOOLS:

- [Spudger \(1\)](#)

SUMMARY

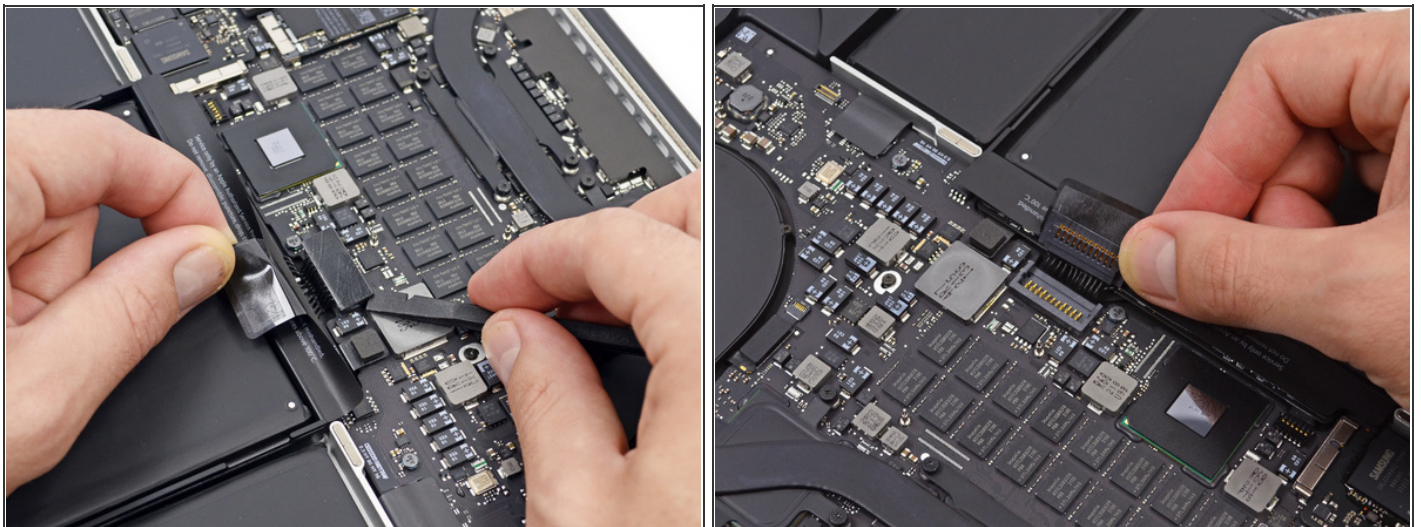
Pre-req only

Step 1 — Battery Connector



- Peel back the warning label covering the battery connector.

Step 2



- Using the flat end of a spudger, gently pry the battery connector straight up out of its socket on the logic board.
- Bend the battery cables back and out of the way, ensuring that the battery connector doesn't accidentally make contact with the logic board.

To reassemble your device, follow these instructions in reverse order.

